



So Many “Massawippis”!

In the same way that delivery drivers can get lost and confused among the many ‘Hatleys’ – five of them – so might you when navigating your way through the charities that use ‘Massawippi’ in their titles.

We are the **Massawippi Foundation** and **Massawippi Conservation Trust**, sister organizations whose mandate is to conserve ecologically important land in the Massawippi watershed, create trails on our protected land

for public use, manage an outdoor education programme for children on our conserved land and support research in environmental practices in the Massawippi watershed.

Blue Massawippi (formerly known as The Massawippi Water Protection Association) concerns itself with all things related to the lake,. The fight against zebra mussels, blue-green algae, etc. and the monitoring of boating activities that are harmful to the ecology of the lake are under its domain.

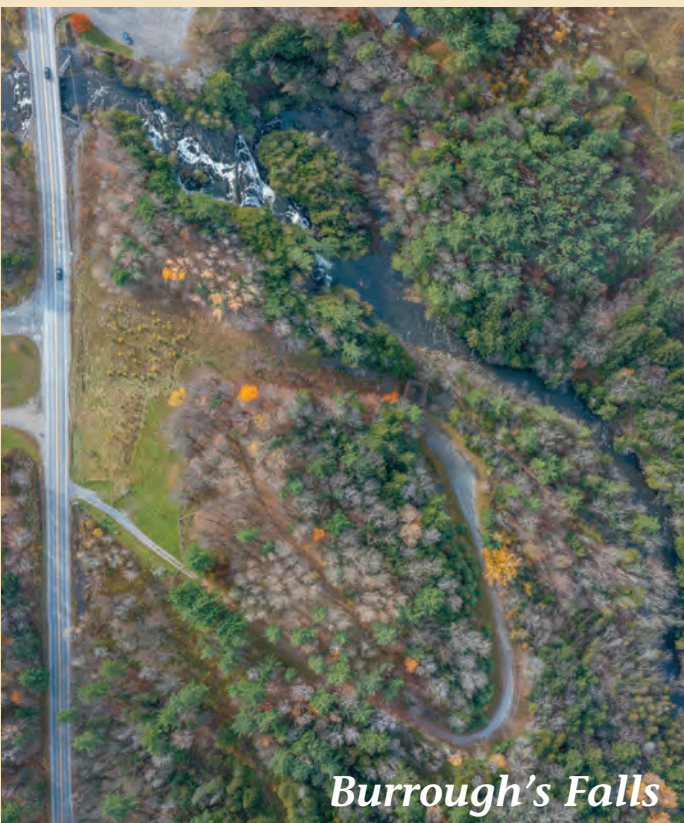
Massawippi Valley Health Foundation (formerly known as the Massawippi Valley Foundation) was created to support the Massawippi Health Clinic in Ayer’s Cliff. It has only one mandate – supporting health care facilities for our local population.

Camp Massawippi is a summer camp on Lake Massawippi that provides a summer experience for youth between 5 and 21 years old, living with hearing, motor or visual impairments.

Lake Massawippi Conservation Club, founded in 1901, is a non-profit organization that promotes the pleasure of fishing, especially for youth, on Lake Massawippi.

So, as I await my Amazon package to find me in the Canton de Hatley, I hope that I have helped you discover and support the work of each of these fine non-profit contributors to our valley that share its beautiful name. They all exist to make life better for all who live here.

—Margot Graham Heyerhoff,
President



Burrough’s Falls

Incredible Growth – Momentous things are happening

No one would have ever imagined 13 years ago that by 2024 the **Massawippi Foundation** and its sister organization the **Massawippi Conservation Trust** would have protected 1,305 acres and accomplished so much under its four tenets of conservation:

CONSERVATION:

- December 2023: we acquired our first two marshlands which both have high ecological importance.
- Signed a conservation servitude with the municipality of Stanstead East, to protect a unique piece of land beside **Burrough’s Falls**.
- One conservation servitude costs approximately \$25,000 (biology reports, surveyor plans, fair market value evaluations, notarial fees and taxes).
- Your donations help us pay for our ongoing expenses.

Thank YOU!

RECREATION:

- This August, we open five kms of new trails extending south of the Sentier Massawippi trails.

Continues next page →

Incredible Growth – Momentous things are happening (continued)

- The team will be working on the eastern side of the lake at Burrough's Falls Park. A short (under 2 km) trail will be opened early summer 2025.
- Your donations help pay for the maintenance and creation of trails. **Thank YOU!**

EDUCATION:

- By the end of the school year, we will have welcomed nearly 800 students to Scowen Park (+50% over last year).
- Each outing is funded by the **Massawippi Foundation**.
- Grants and private individual donations help us to pay for the program. **Thank YOU!**

RESEARCH:

- Having completed one research study with U. de S., phase 2 will begin under Professor Bruno Courtemanche at Bishop's University.
- We hope to work alongside agricultural producers, helping them protect their erosion-sensitive lands through good conservation practices and to maintain the economic value of their farms.
- Studies are funded by the **Massawippi Foundation** with the help of your donations. **Thank YOU!**

A few of our 2023-24 Success Stories

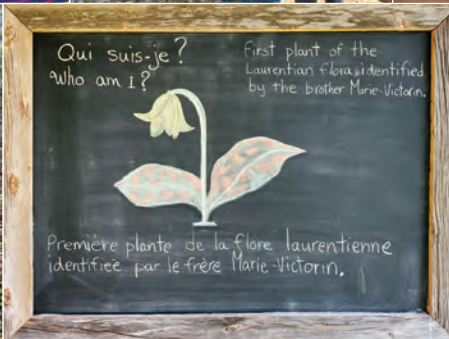
Education program

The **Nature Education program** for schools began in 2022. The program is built on the premise that “We protect what we love. We love what we know.” Themes change per season; the value of the program is its content but its approach which emphasizes:

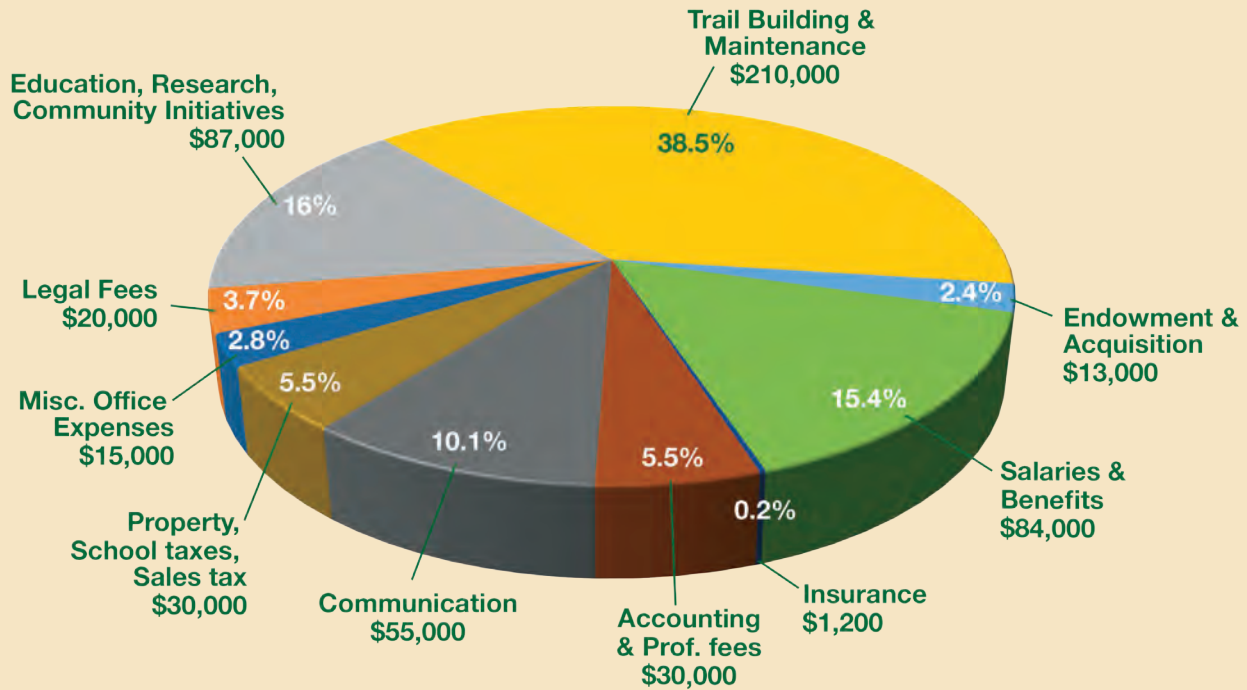
- Cultivating curiosity and wonder for the natural world;
- Encouraging careful observation using all the senses;
- Approaching learning through inquiry;
- Mindfulness in our interactions with the natural world.

Each outing begins with a “curiosity warm-up”, an introduction to the park, followed with a walk/activity on the trails and ends with a snack at the lean-to. The cost of the activity, including transportation, is paid for by the **Massawippi Foundation**. We currently host 16 classes from nine schools of the region (Waterville, North Hatley, Ayer's Cliff, Stanstead and Magog).

Thank you to this year's funding partners: **The Molson Foundation**, the **Eric T. Webster Foundation** and the **Fondation Lorraine et Jean Turmel** who supported the program



The Massawippi Foundation funds much of the Massawippi Conservation Trust operational budget. This is why we have an annual giving campaign.



Total MCT Operational Budget 2024
\$545,200

More about conservation

We have expanded our conservation territory to include the entire watershed of Lake Massawippi.

Wetlands are the kidneys of the lake, naturally filtering pollutants from the water. They help mitigate floods, acting like sponges. They capture carbon which, if destroyed, would be released into the atmosphere.

We acquired a donation of 20 acres in the middle of a large marshland at the southern end of the lake (*see Project 27 on map next page*). This piece will, in legal terms, be known as the dominant property to which other landowners in the same area can attach a conservation servitude. By protecting the marsh with a perpetual agreement, we are ensuring that despite changing municipal by-laws or advances in technology, these properties remain protected.

It's easy to donate!

Scan this QR code to take you to massawippi.org/donate



What are the criteria to conserve a property?

- #1 Is it an ecosystem of local or regional interest?
- #2 Is it a habitat or a potential habitat for endangered wildlife and plant species?
- #3 Is it an area of wildlife interest?
- #4 Is it part of a hydrographic network?
- #5 Is it in an area of physical constraint?
- #6 Is it contiguous to an area already conserved?
- #7 Is the size of its forested area large?
- #8 Its zoning – **white** (can be developed) or **green** (protected for agriculture)?

We protect what we love, we love what we know.

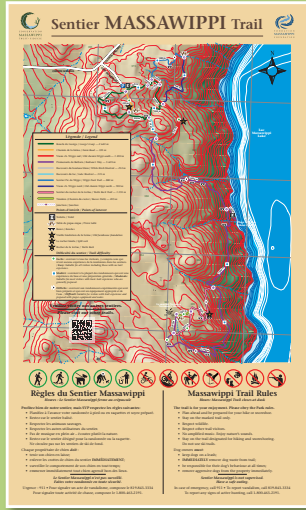


FONDATION
MASSAWIPPI
FOUNDATION

Bassin versant du lac Massawippi Lake Massawippi Watershed



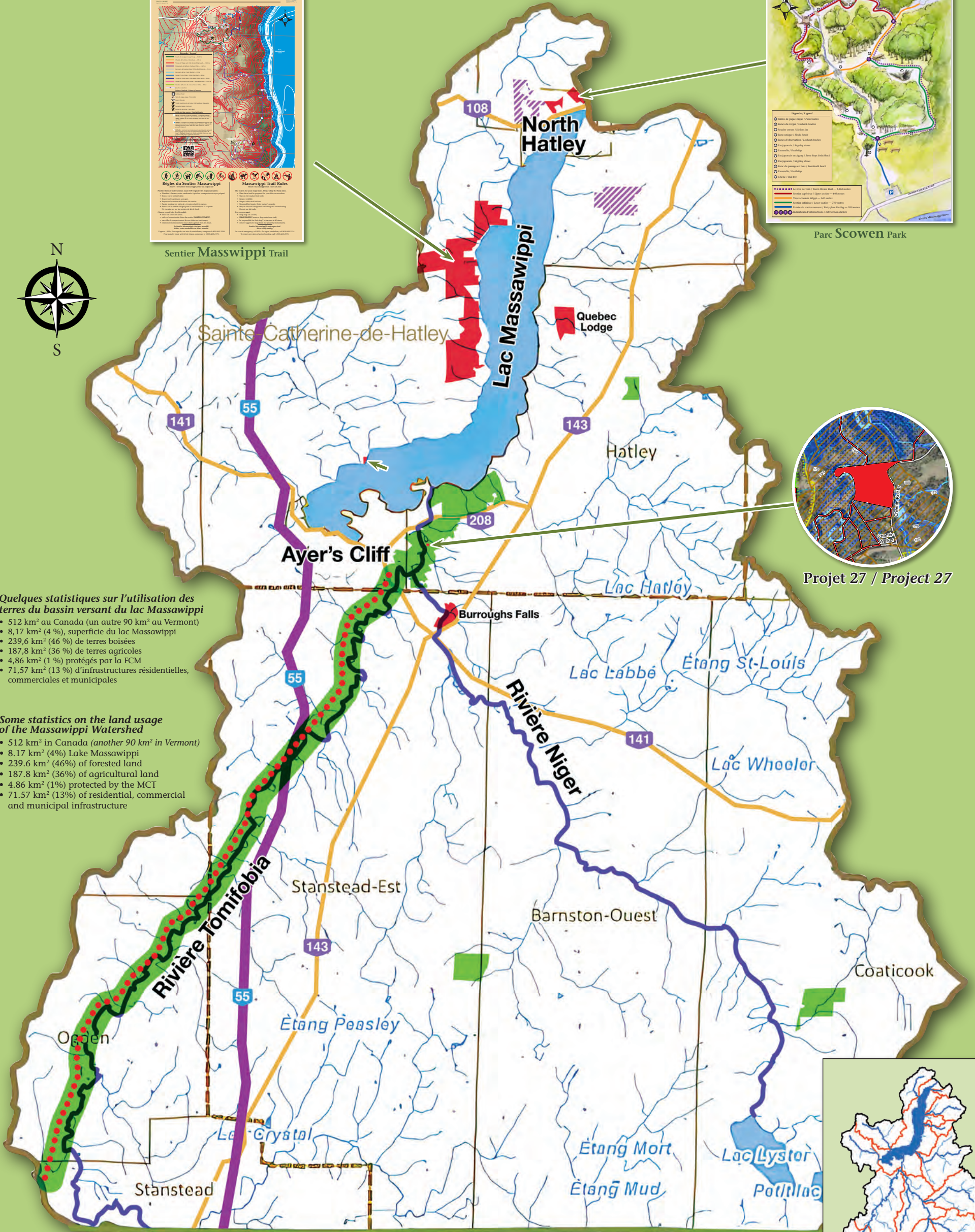
CONSERVATION
MASSAWIPPI
TRUST • FIDUCIE



Sentier Massawippi Trail



Parc SCOWEN Park



Projet 27 / Project 27

Quelques statistiques sur l'utilisation des terres du bassin versant du lac Massawippi

- 512 km² au Canada (un autre 90 km² au Vermont)
- 8,17 km² (4%), superficie du lac Massawippi
- 239,6 km² (46%) de terres boisées
- 187,8 km² (36%) de terres agricoles
- 4,86 km² (1%) protégés par la FCM
- 71,57 km² (13%) d'infrastructures résidentielles, commerciales et municipales

Some statistics on the land usage of the Massawippi Watershed

- 512 km² in Canada (another 90 km² in Vermont)
- 8.17 km² (4%) Lake Massawippi
- 239.6 km² (46%) of forested land
- 187.8 km² (36%) of agricultural land
- 4.86 km² (1%) protected by the MCT
- 71.57 km² (13%) of residential, commercial and municipal infrastructure

- Propriétés protégées par la FCM / MCT protected properties
- Projets d'acquisition et de protection / Projected acquisitions & conservation projects
- ▨ Premières exploitations agricoles / First working farms
- Sentier Nature Tomifobia / Tomifobia Nature Trail

